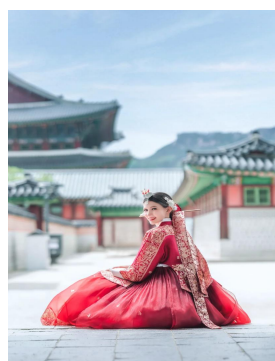
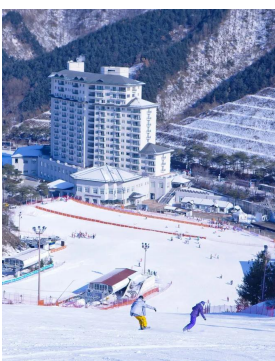
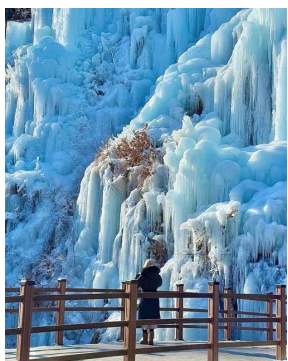
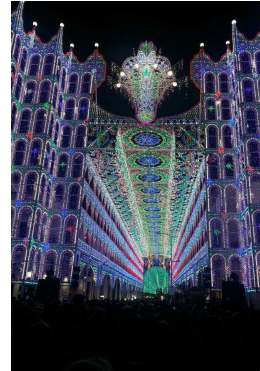
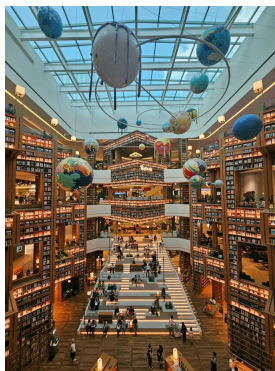


SOUTH KOREA

Welcome to South Korea



Seoul Winter Fun 5D4N Tour



DATE	CITY	ITINERARY	MEAL	HOTEL
D1	Manila - Incheon - Suwon - Seoul AIR/BUS	<ul style="list-style-type: none"> ➤ ETA : Z2884 MNL-ICN 07:00-11:55 ● Fly to Incheon. Meet & Greet by your tour guide at airport. ● Visit [COEX Starfield Library] ● Visit [Gangnam Style Statue] ● Visit [Winter of Seokchon Lake and Luminaries Festival] The Luminaries Festival, a representative festival of Songpa-gu during autumn and winter, lights up the areas of Seokchonhosu Lake with illuminations, photo zones and more. ● Transfer to hotel and check in 	X/L/D	3*Hangang Gold Hotel(20sqm) or 3*Hotel Aventree Yeouido(22sqm) or 3*Hotel Park Habio (23sqm) Or similar
D2	Seoul - Chuncheon - Seoul BUS	<ul style="list-style-type: none"> ● Breakfast at hotel ● Visit [Nami Island + Return Ferry Ride] ● Visit [Eobi Ice Valley] ● Eobi Ice Valley's opening is subject to weather conditions. In case the temperature isn't low enough for the valley to freeze, the [Soyanggang Skywalk] will be provided as an alternative attraction. ● Enjoy Ski experience at [Ski Resort](Arrange Elysian Ski Resort with priority, if Elysian cannot be arranged, will replace with another.) Optional Ski : Ski Suit & Equipment USD 50/Pax(Excluding Ski helmet, gloves, ski goggles and other equipment) *Guest are not allowed to enter snow field without ski equipment. ● Transfer to hotel 	B/L/D	Same as above

SOUTH KOREA

Welcome to South Korea



D3	Seoul BUS	<ul style="list-style-type: none"> ● Breakfast at hotel ● Visit [Gyeongbokgung](Include hanbok wearing, Exc. Hairdo & Makeup. *Closed Every TUE, replace to Changdeokgung) ● Visit [Gwanghwamun Square] ● Pass by [Blue House] ● Visit [National Folk Museum](*Closed Every TUE) ● Visit [Insadong Antique Street] ● Visit [Dongdaemun DDP Plaza + Dongdaemun] ● Transfer to hotel 	B/L/X	Same as above
D4	Seoul BUS	<ul style="list-style-type: none"> ● Breakfast at hotel ● Visit [Seaweed Museum with Gimbap DIY + Hanbok Wearing experience] ● Compulsory Shopping Stop : Ginseng Shop , Cosmetic Shop , Healthy Liver Shop ● Visit [Myeongdong]+[Duty Free Shop] ● Transfer to hotel 	B/L/X	Same as above
D5	Seoul - Incheon - Manila BUS/AIR	<ul style="list-style-type: none"> ● Breakfast at hotel & check out ● Visit [Local Product Shop] (Depending on the flight) ● Transfer to airport , fly back to sweet home. <p>➤ ETD: Z2885 ICN-MNL 13:00-16:15</p>	B/X/X	Sweet home

QUOTATION Based on 25 Paxs

Travel Date	Adults (Twin sharing)	Child no bed (2-11 years old)	Single Supplement	Tip
18DEC-22DEC,2025	USD799/PAX	USD680/PAX	USD200/PAX	25USD/PAX
12JAN-16JAN,2026	USD699/PAX	USD639/PAX		
23JAN-27JAN,2026	USD699/PAX	USD639/PAX		
14FEB-18FEB,2026	USD699/PAX	USD639/PAX		

Remarks:

1. 25paxs based on 45 seats Bus with English speaking tour guide.
2. Pls kindly noted that based on local rule, Kids 12 years old and above, should with bed.
3. If the mentioned hotel unavailable for our tour date, we might change to similar standard hotel.
4. Meals Cuisine:Chuncheon Spicy Stir Fry Chicken/Ginseng Chicken(Michelin) /Korean BBQ Buffet/ Tteokbokki Hot Pot Buffet. Meal as above mentioned, sequence subject to change based on local condition.

5. **This is Mandatory Shopping Stop tour.**

1)Ginseng Shop 2)Cosmetic Shop 3)Healthy Liver Shop

----Pls kindly noted that tthis tour package has included **Mandatory Shopping Stop . If based on non compulsory, USD300/PAX will be required.**

6. **Optional tour--Excluded**

SOUTH KOREA

Welcome to South Korea



Ski experience: Ski suit and equipment USD50/PAX

INCLUSIONS	EXCLUSIONS
<ul style="list-style-type: none">● International airfare Airport tax & Terminal fee.● 20KG(1pc) checked-in luggage and 7KG hand carry-on luggage.● Private bus with English speaking tour guide(1 bus,1 tour guide)● Sightseeing tours as specified above included all entrance fee needed● 4Nights' accommodation at choice hotel with daily hotel breakfast base on twin rooms● Meals: 4 Breakfasts at hotel+ 4 Lunches+2Dinners	<ul style="list-style-type: none">● Expenses of a personal nature like telephone calls, mini bar, etc.● Single supplement● Korea Visa● Travel insurance● Tips for driver and guide: USD25/PAX(collected with tour fee)● The Philippine Travel tax: USD30/PAX(collected with tour fee)● Optional Tour :Ski experience(Ski suit and equipment USD50/PAX)

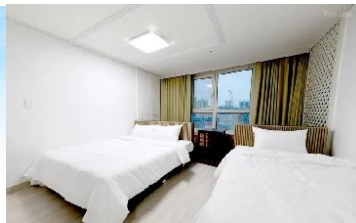
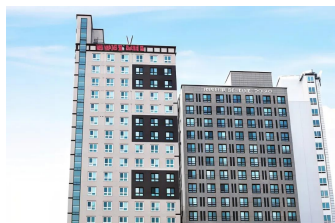
Important Notice

*Down payment: **Non-Refundable/Unchangeable USD300/PAX** in 3 days once confirmed to join in

*The rest payment will pay one month before departure

*The rate based on twin sharing, less triple sharing rooms, if triple room available, we will arrange one twin bed room with one single bed room (the person use single bed room will require single supplement)

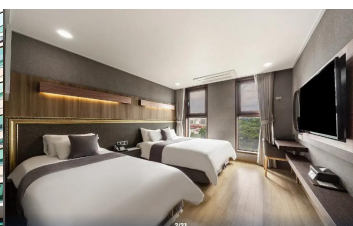
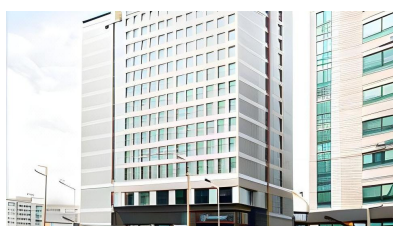
Hotel details



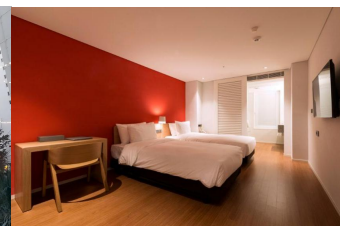
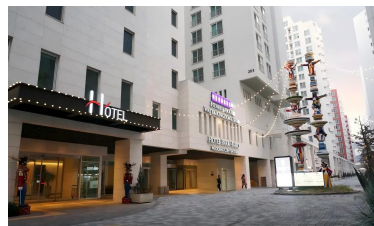
3*Hangang Gold Hotel(20sqm)-Twin Room



3*Hotel Aventree Yeouido(22sqm) -Twin Room



3*Hotel l'Art Gimpo(20sqm)-Twin Room



3*Hotel Park Habio(23sqm) -Twin Room