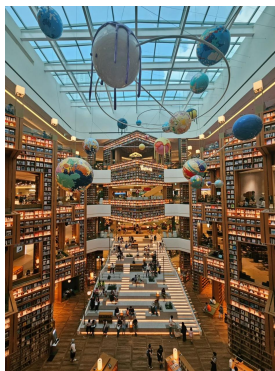


SOUTH KOREA

Welcome to South Korea



Seoul Fun 5D4N Tour



DATE	CITY	ITINERARY	MEAL	HOTEL
D1	Manila - Incheon - Suwon - Seoul AIR/BUS	<p>➤ ETA : Z2884 MNL-ICN 07:00-11:55</p> <ul style="list-style-type: none"> ● Fly to Incheon. Meet & Greet by your tour guide at airport. ● Visit [Suwon Starfield Library] ● Visit [Suwon Hwaseong Fortress] ● Visit [Hwaseong Haenggung] ● Transfer to hotel and check in 	X/L/D	3*Hangang Gold Hotel(20sqm) or 3*Hotel Aventure Yeouido(22sqm) or 3*Hotel Park Habio (23sqm) Or similar
D2	Seoul - Ansan - Chuncheon - Seoul BUS	<ul style="list-style-type: none"> ● Breakfast at hotel ● Visit [Kyochon DIY 1991 School (Experience DIY Fried Chicken)] (Includes samples for tasting and one serving of boneless chicken per person) ● Visit [Nami Island + Return Ferry Ride] ● Transfer to hotel 	B/X/D	Same as above

SOUTH KOREA

Welcome to South Korea



JSC
TRAVEL & TOURS

D3	Seoul BUS	<ul style="list-style-type: none"> ● Breakfast at hotel ● Visit [Gyeongbokgung](Include hanbok wearing, Exc. Hairdo & Makeup. *Closed Every TUE, replace to Changdeokgung) ● Visit [Gwanghwamun Square] ● Pass by [Blue House] ● Visit [National Folk Museum](*Closed Every TUE) ● Visit [Insadong Antique Street] ● Visit [Dongdaemun DDP Plaza + Dongdaemun] ● Transfer to hotel 	B/L/X	Same as above
D4	Seoul BUS	<ul style="list-style-type: none"> ● Breakfast at hotel ● Visit [Seaweed Museum with Gimbap DIY + Hanbok Wearing experience] ● Compulsory Shopping Stop : Ginseng Shop , Cosmetic Shop , Healthy Liver Shop ● Visit [Myeongdong]+[Duty Free Shop] ● Transfer to hotel 	B/L/X	Same as above
D5	Seoul - Incheon - Manila BUS/AIR	<ul style="list-style-type: none"> ● Breakfast at hotel & check out ● Visit [Local Product Shop] (Depending on the flight) ● Transfer to airport , fly back to sweet home. <p>➤ ETD: Z2885 ICN-MNL 13:00-16:15</p>	B/X/X	Sweet home

QUOTATION Based on 25 Paxs

Travel Date	Adults (Twin sharing)	Child no bed (2-11 years old)	Single Supplement	Tip
27OCT-31OCT,2025	USD599/PAX	USD509/PAX	USD200/PAX	25USD/PAX
30OCT-03NOV,2025	USD649/PAX	USD555/PAX		
29NOV-03DEC,2025	USD599/PAX	USD509/PAX		
05DEC-09DEC,2025	USD599/PAX	USD509/PAX		
19DEC-23DEC,2025	USD649/PAX	USD555/PAX		
21DEC-25DEC,2025	USD749/PAX	USD638/PAX		
31DEC-04JAN,2026	USD749/PAX	USD638/PAX		
01JAN-05JAN,2026	USD699/PAX	USD595/PAX		

SOUTH KOREA

Welcome to South Korea



Remarks:

1. 25paxs based on 45 seats Bus with English speaking tour guide.
2. Pls kindly noted that based on local rule, Kids 12 years old and above, should with bed.
3. If the mentioned hotel unavailable for our tour date, we might change to similar standard hotel.
4. Meals Cuisine:Chuncheon Spicy Stir Fry Chicken/Ginseng Chicken(Michelin) /Korean BBQ Buffet/ Tteokbokki Hot Pot Buffet. Meal as above mentioned, sequence subject to change based on local condition.

5. **This is Mandatory Shopping Stop tour.**

1)Ginseng Shop 2)Cosmetic Shop 3)Healthy Liver Shop

---Pls kindly noted that tthis tour package has included Mandatory Shopping Stop . If based on non compulsory, USD300/PAX will be required.

INCLUSIONS	EXCLUSIONS
<ul style="list-style-type: none"> ● International airfare Airport tax & Terminal fee. ● 20KG(1pc) checked-in luggage and 7KG hand carry-on luggage. ● Private bus with English speaking tour guide(1 bus,1 tour guide) ● Sightseeing tours as specified above included all entrance fee needed ● 4Nights' accommodation at choice hotel with daily hotel breakfast base on twin rooms ● Meals: 4 Breakfasts at hotel+ 3 Lunches+2Dinners 	<ul style="list-style-type: none"> ● Expenses of a personal nature like telephone calls, mini bar, etc. ● Single supplement ● Korea Visa ● Travel insurance ● Tips for driver and guide: USD25/PAX(collected with tour fee) ● The Philippine Travel tax: USD30/PAX(collected with tour fee)

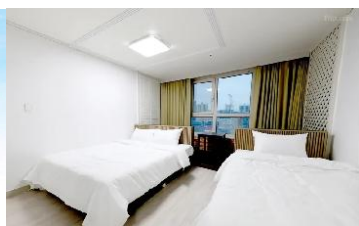
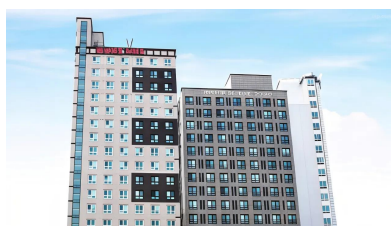
Important Notice

*Down payment: **Non-Refundable/Unchangeable USD300/PAX** in 3 days once confirmed to join in

*The rest payment will pay one month before departure

*The rate based on twin sharing, less triple sharing rooms, if triple room available, we will arrange one twin bed room with one single bed room (the person use single bed room will require single supplement)

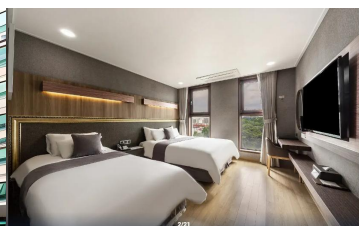
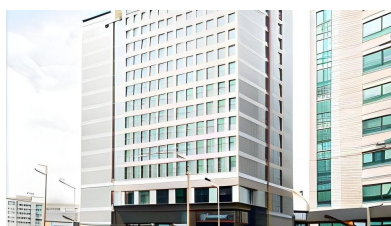
Hotel details



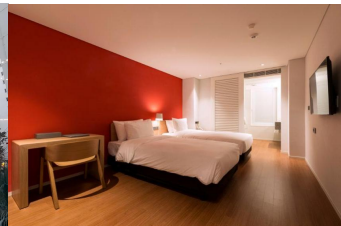
3*Hangang Gold Hotel(20sqm)-Twin Room



3*Hotel Aventree Yeouido(22sqm) -Twin Room



3*Hotel l'Art Gimpo(20sqm)-Twin Room



3*Hotel Park Habio(23sqm) -Twin Room